

Changes in employment between
May 2015-May 2016



Manufacturing:
↑ +1.9%
+1,400 jobs



Leisure and hospitality:
↑ +3.6%
+3,800 jobs



Health services and private education:
↑ +2.1%
+3,100 jobs

Trade, Transportation and Utilities:

↑ +0.6%
+1,200 jobs

| | | |
|------------------------------|-------|------|
| Wholesale | +0.4% | +200 |
| Retail | +0.8% | +900 |
| Transportation and utilities | +0.2% | +100 |



Financial activity:

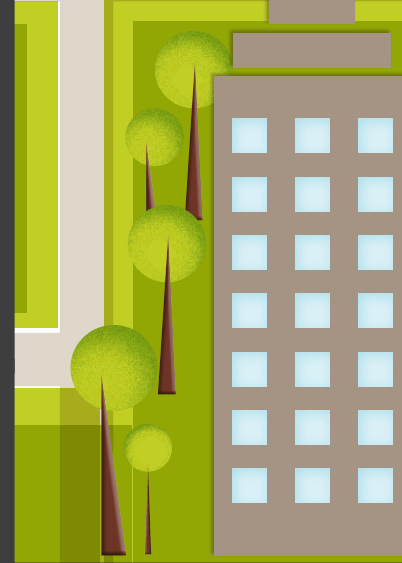
↑ +4.0%
+3,000 jobs



Government services:

↑ +0.1%
+200 jobs

| | | |
|---------|-------|------|
| Federal | +1.1% | +300 |
| State | -1.9% | -300 |
| Local | +0.2% | +200 |



Professional business services:

↑ +1.6%
+3,000 jobs

| | | |
|--------------------------------|-------|--------|
| Professional/Tech | 1.3% | +1,100 |
| Management of companies | +1.4% | +400 |
| Admin. support and waste mgmt. | +2.1% | +1,500 |



Other services:

— +0.0%
+0 jobs

Mining, logging and construction:

↑ +0.9%
+400 jobs



Information:

↓ -8.2%
-1,700 jobs

Note about the data:

Data is not seasonally adjusted. Year over year change is used to remove any seasonal hiring patterns by industry.

Source: Current Employment Statistics (CES)